
Proposed Church Structure Overview Presentation

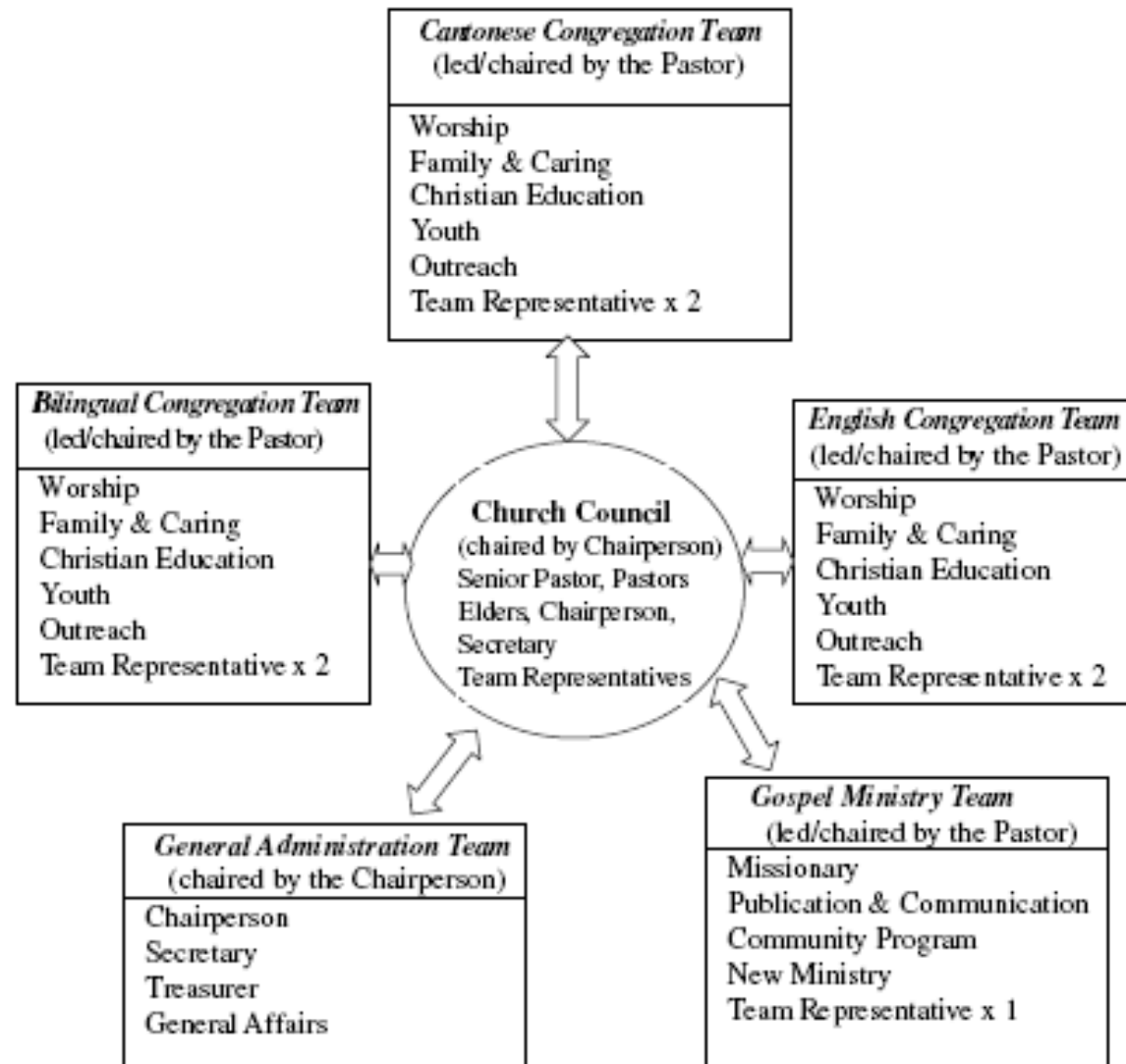
Structure Review Committee

2008

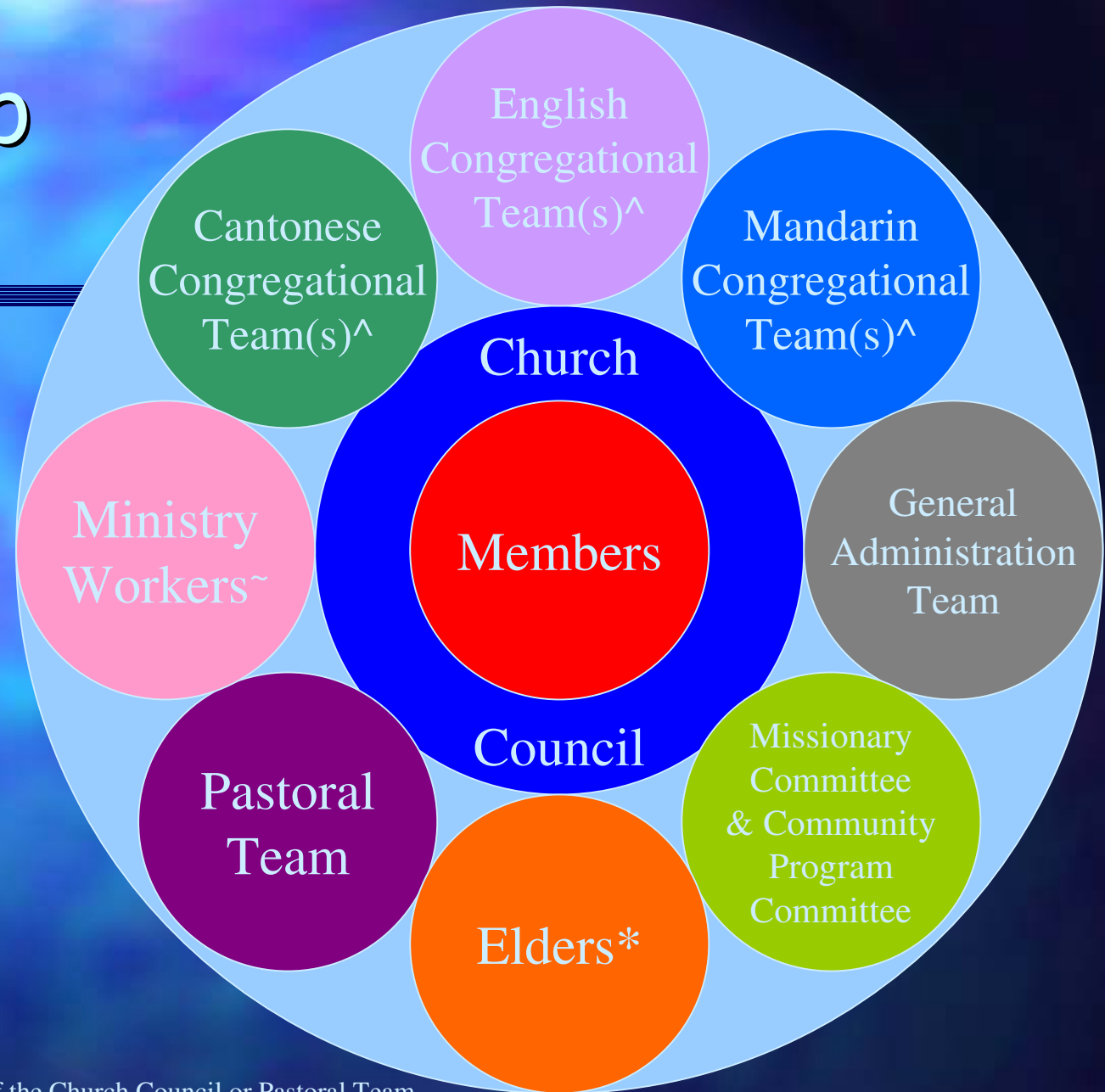


Existing Structure

B.1 The leadership structure of C.A.B.C. – West Ryde can be represented by the following diagram



Leadership Chart



~ Ministry Workers are not members of the Church Council or Pastoral Team.

* Elders are part of the Pastoral Team and their respective Language Ministry Team but are not part of Church Council.

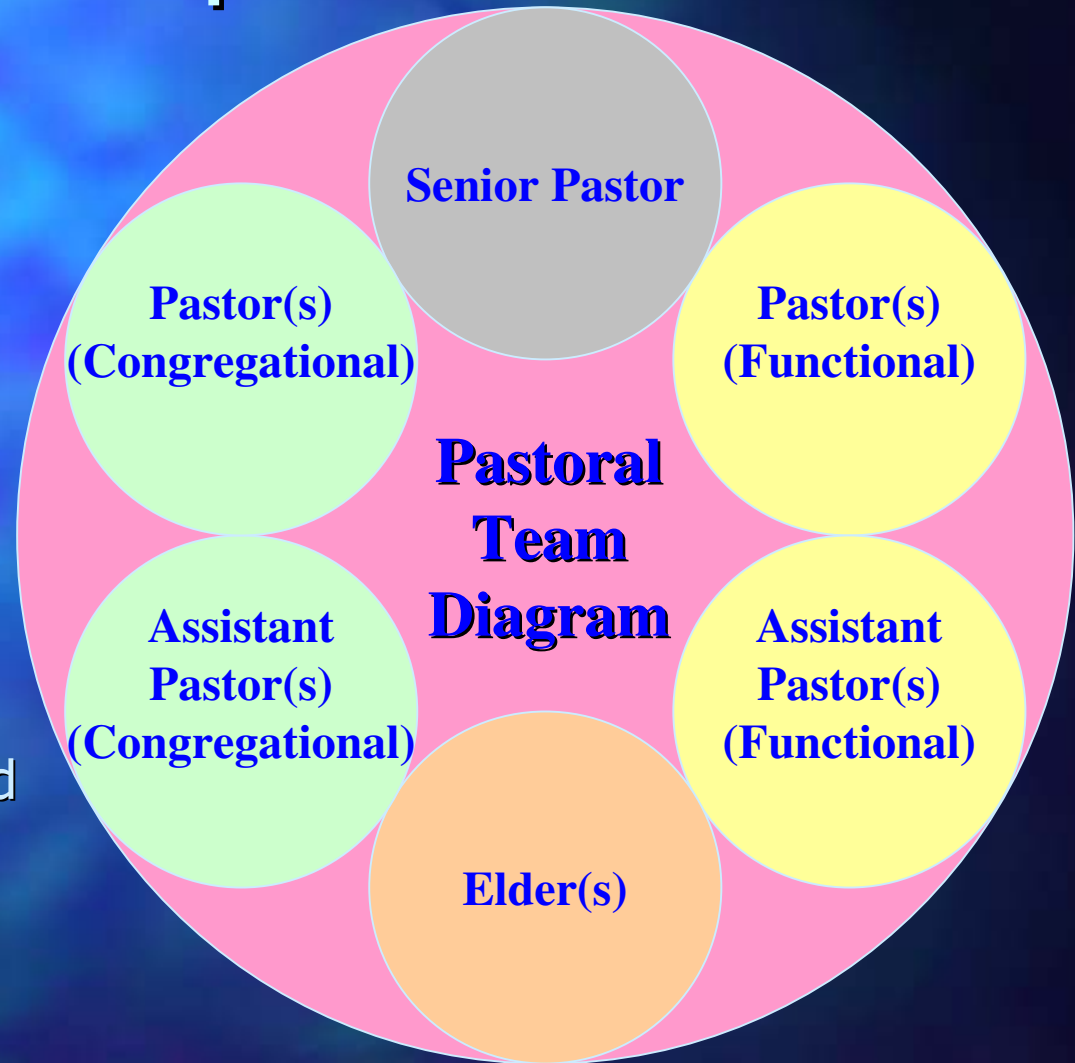
^ Not shown here are the Language Ministry Teams formed by those Pastors, Assistant Pastors, and Elders serving in the respective single language congregation(s) only.

Church Council Composition

- Senior Pastor
- Team Representatives from Language Ministry Teams
- Team Representatives from Congregational Teams
- Chairperson
- Secretary

Pastoral Team Expansion

- Consist of
 - Senior Pastor
 - Pastors:
 - Congregational
 - Functional
 - Assistant Pastors:
 - Congregational
 - Functional
 - Elders
- Differences will be resolved through Senior Pastors
- Elders & Pastors require 75% members support to appoint



Functional Pastors

- Ministry based, not Congregational based
- Expect to serve in the same ministry on a cross congregational base
- Part of Language Ministry Team
- If serve on cross-congregational, and cross-language basis, they can decide on their membership of only one language ministry team among the language(s) they serve.

Congregational Team

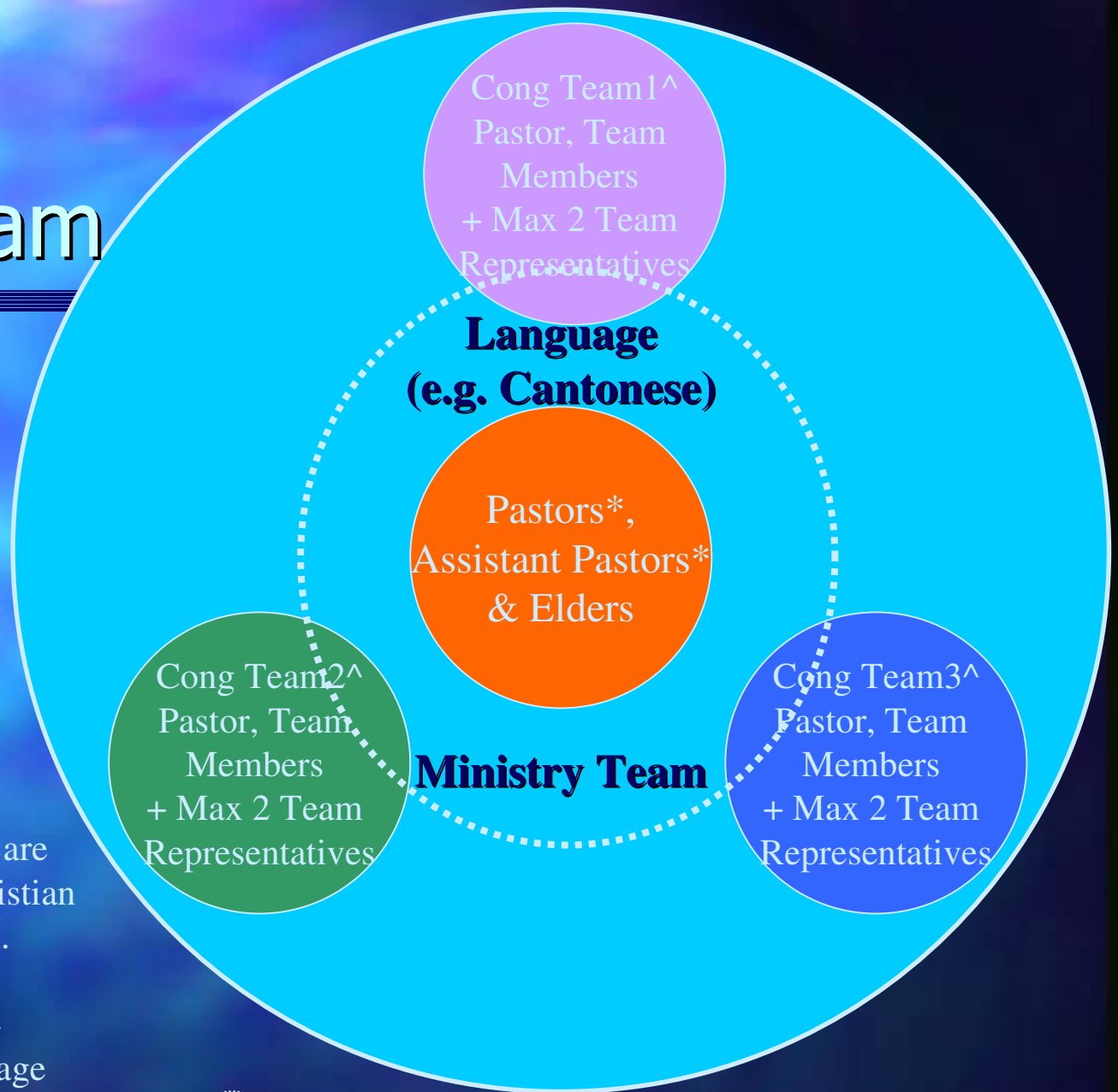
- Consist of Team Members & Team Representatives
- Congregational Pastor as Team Leader
- Each Congregation will elect their own congregational team members/reps.
- Worship, Family Caring, Christian Education, Youth, Outreach
- Team Reps attend Church Council

Consolidate Pastoral Resources by Languages

- Established Cantonese, English, Mandarin Language Ministries
- Each Cong Team has its own elected team members & team reps
- Pastors, Assistant Pastors & Elders serving in the same language will form the respective language ministry team
- One Team Rep* from each Language Ministry Team attend Church Council

* Decided by each Language Ministry Team themselves

Language Ministry Team



[^] Congregational Team Members are Worship, Family & Caring, Christian Education, Youth, and Outreach.

* Pastor(s)/Assistant Pastor(s) (functional) who serve on cross-congregational, and cross-language basis can decide on their membership of only one language ministry team among the language(s) they serve.



Pastor(s) (Congregational), Assistant Pastor(s) (Congregational), and Elder(s) are team members according to their congregations' language.

Ministry Workers

- Paid staff carrying out specialised functional ministry
- Require 75% members support to appoint
- Scope of ministry could be X-Congregational, X-Languages, or Whole Church
- Reporting line decide at appointment
- Examples of ministries that would benefit from having a paid ministry workers are:
 - Website Maintenance
 - Sunday School Admin
 - Caring / Counselling
- Not members of pastoral team or any language ministry teams
- Are encouraged to attend the respective Language Ministry Team meetings

General Administration Team

- Comprise of 5 members, viz. Chairperson, Secretary, Treasurer, General Affairs, Publication & Communication*
- Chairperson & Secretary attend Church Council
- Allow team members to form their own subcommittee as needs arises
- Ministry Worker(s) could be assigned to report to General Admin Team Members

Two Recognized Committees

- Missionary Committee with an elected Chairperson
- Community Program Committee with an elected Chairperson
- These two Chairpersons will not be part of Church Council
- Represented at Church Council by the Senior pastors or his/her delegates* who attending these committees

* Senior Pastor's delegates to these committees will be pastors but these pastors may not necessary be a church council member.